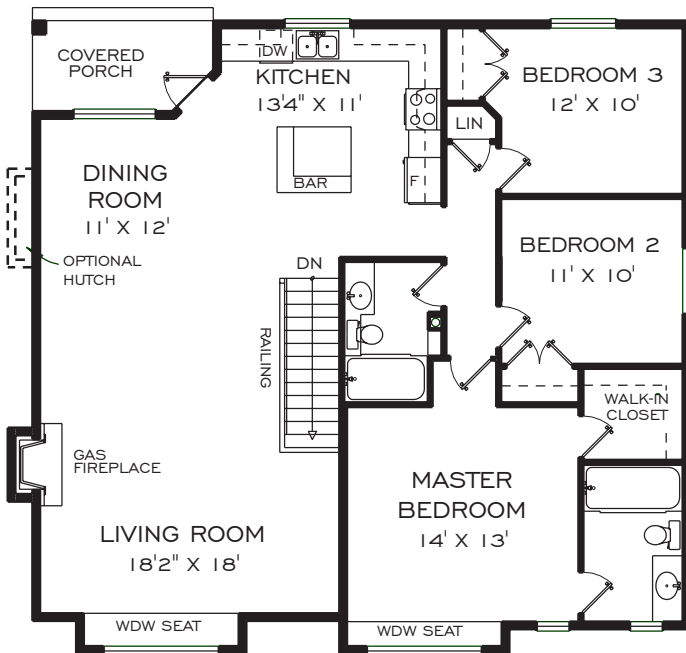




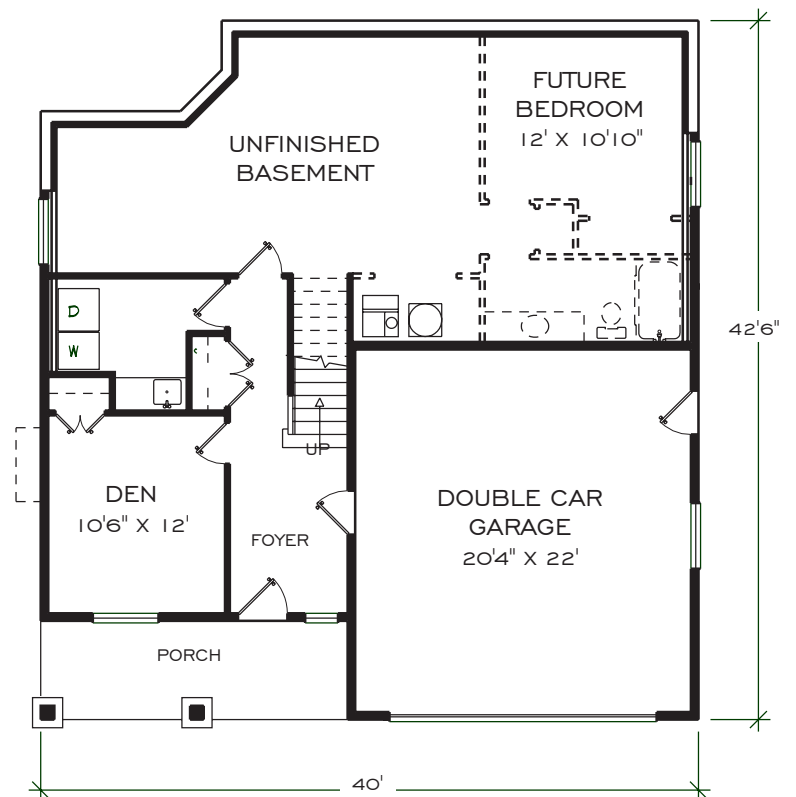
IRONSTONE
RIDGE

BASEMENT ENTRY - PLAN NO. GB-141

3 BDRM, 2 BATH: FINISHED FLOOR AREA: 1,449 SQ.FT.



MAIN FLOOR PLAN
FINISHED AREA = 1449 SQ.FT.



BASEMENT FLOOR PLAN
FINISHED AREA = 1058 SQ.FT.
GARAGE AREA = 472 SQ.FT.



IRONSTONE RIDGE RESERVES THE RIGHT TO MAKE MODIFICATIONS TO PRICING WITHOUT NOTICE.

AT LOGAN LAKE

IRONSTONERIDGE.COM

MIKE SHANNON | CELL: 250 819 3324 | MIKESHANNON@ROYALLEPAGE.CA

IN THE INTEREST OF MAINTAINING THE STANDARD OF THIS PROJECT, IRONSTONE RIDGE RESERVES THE RIGHT TO MAKE MODIFICATIONS AND CHANGES. SIZES AND/OR DIMENSIONS MAY VARY FROM THE ACTUAL SURVEY. MEASUREMENTS ARE APPROXIMATE AND SHOULD BE VERIFIED.