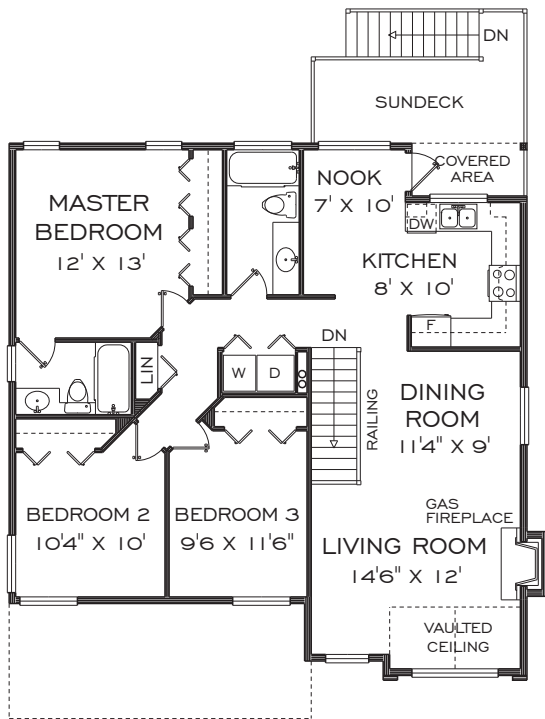




**IRONSTONE**  
RIDGE

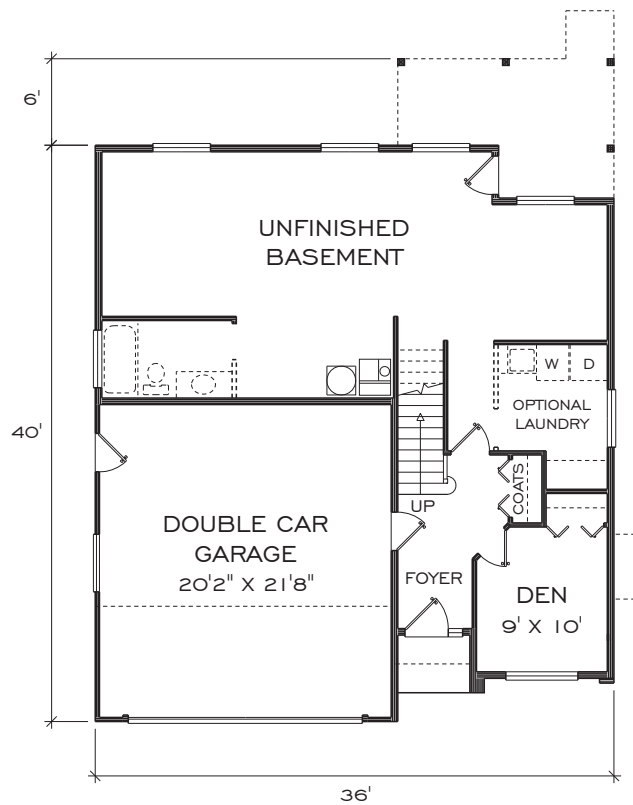
**BASEMENT ENTRY - PLAN NO. GB-101**

3 BDRM, 2 BATH: FINISHED FLOOR AREA: 1,194 SQ.FT.



**MAIN FLOOR PLAN**

FINISHED AREA = 1194 SQ.FT.



**BASEMENT FLOOR PLAN**

FINISHED AREA = 896 SQ.FT.  
GARAGE AREA = 455 SQ.FT.



HELPING YOU IS WHAT WE DO

IRONSTONE RIDGE RESERVES THE RIGHT TO MAKE MODIFICATIONS TO PRICING WITHOUT NOTICE.

AT LOGAN LAKE

IRONSTONERIDGE.COM

MIKE SHANNON | CELL: 250 819 3324 | MIKESHANNON@ROYALLEPAGE.CA

IN THE INTEREST OF MAINTAINING THE STANDARD OF THIS PROJECT, IRONSTONE RIDGE RESERVES THE RIGHT TO MAKE MODIFICATIONS AND CHANGES. SIZES AND/OR DIMENSIONS MAY VARY FROM THE ACTUAL SURVEY. MEASUREMENTS ARE APPROXIMATE AND SHOULD BE VERIFIED.