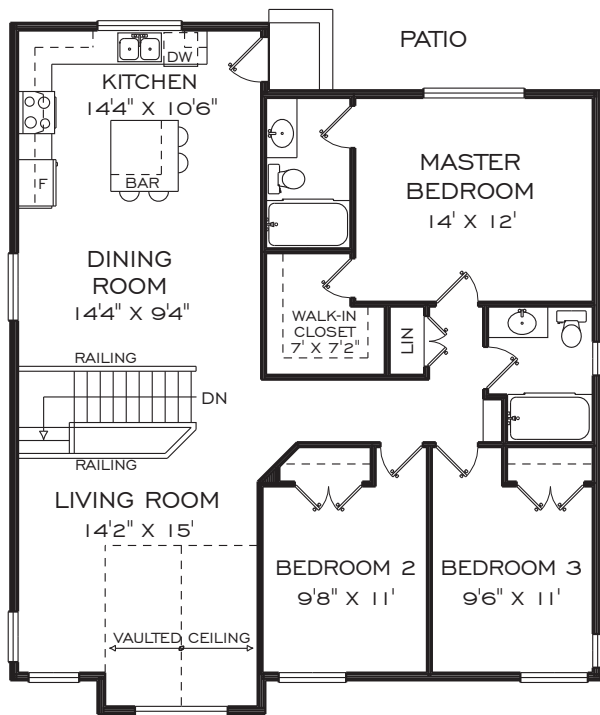




IRONSTONE
RIDGE

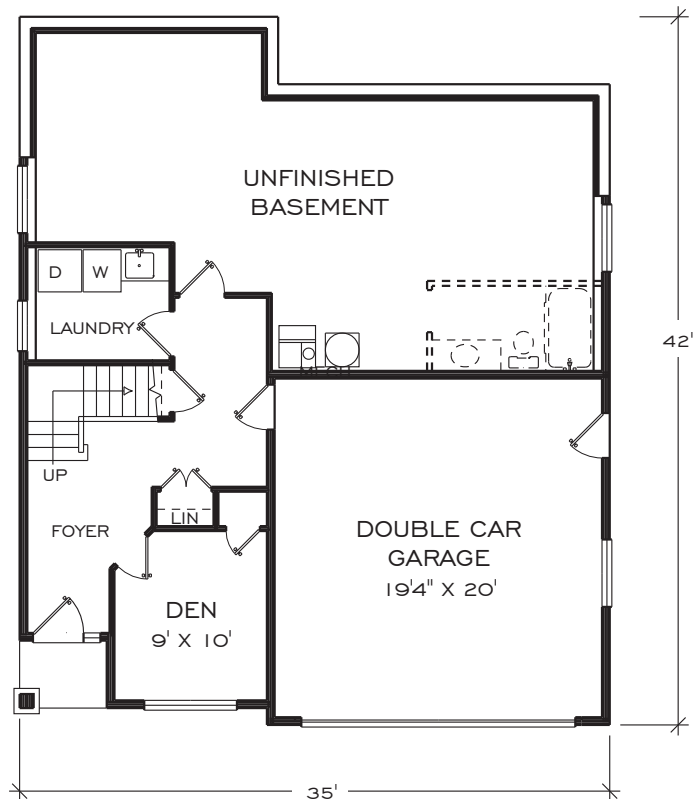
BASEMENT ENTRY - PLAN NO. GB-156

3 BDRM, 2 BATH: FINISHED FLOOR AREA: 1,306 SQ.FT.



MAIN FLOOR PLAN

FINISHED AREA = 1306 SQ.FT.



BASEMENT FLOOR PLAN

FINISHED AREA = 948 SQ.FT.
GARAGE AREA = 430 SQ.FT.

IRONSTONE RIDGE RESERVES THE RIGHT TO MAKE MODIFICATIONS TO PRICING WITHOUT NOTICE.



AT LOGAN LAKE

IRONSTONERIDGE.COM

MIKE SHANNON | CELL: 250 819 3324 | MIKESHANNON@ROYALLEPAGE.CA

IN THE INTEREST OF MAINTAINING THE STANDARD OF THIS PROJECT, IRONSTONE RIDGE RESERVES THE RIGHT TO MAKE MODIFICATIONS AND CHANGES. SIZES AND/OR DIMENSIONS MAY VARY FROM THE ACTUAL SURVEY. MEASUREMENTS ARE APPROXIMATE AND SHOULD BE VERIFIED.